

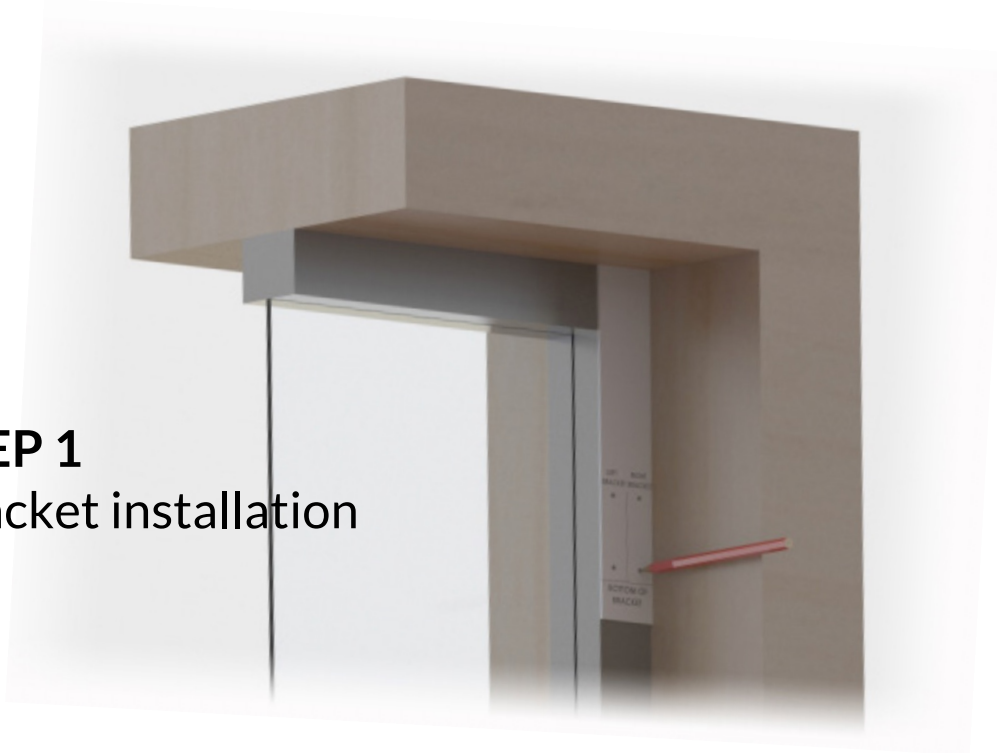
Dayliter Shade Installation Instructions

S Series with Worm Drive

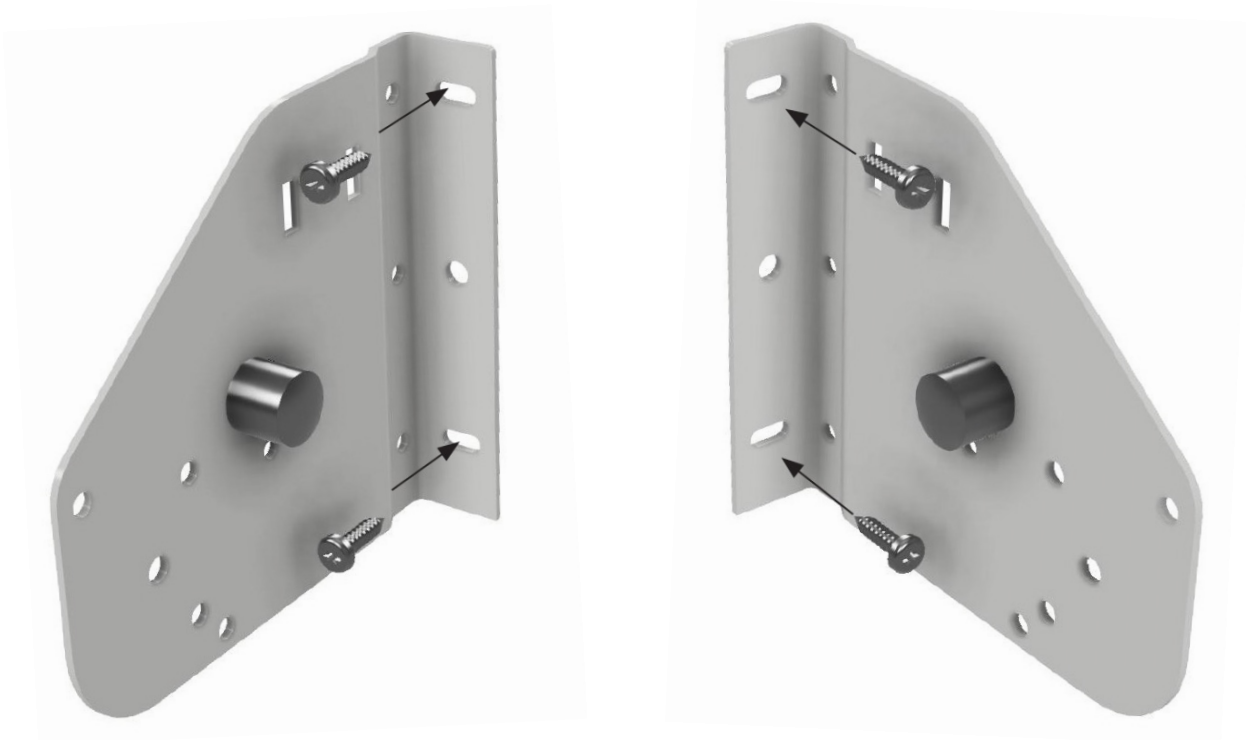


STEP 1

Bracket installation



Using the template provided hold against the window head and mark the location of the mounting screws. Use against window frame for front mount and against jamb for side mount. If no template is available mark the bottom of the bracket using the lightshelf size as a guide (mark 16" down for S1600 lightshelf, 18" for S1800 etc.)

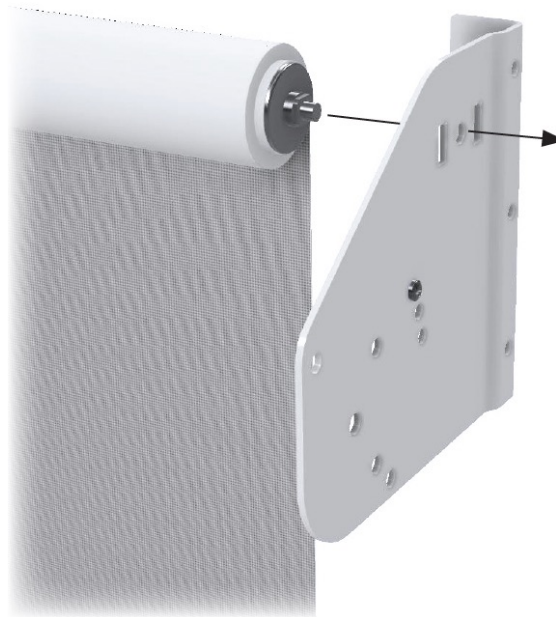


Attach mounting brackets with the appropriate screws (provided). Note that one bracket will have a rubber stop the other a worm drive attached.

STEP 2

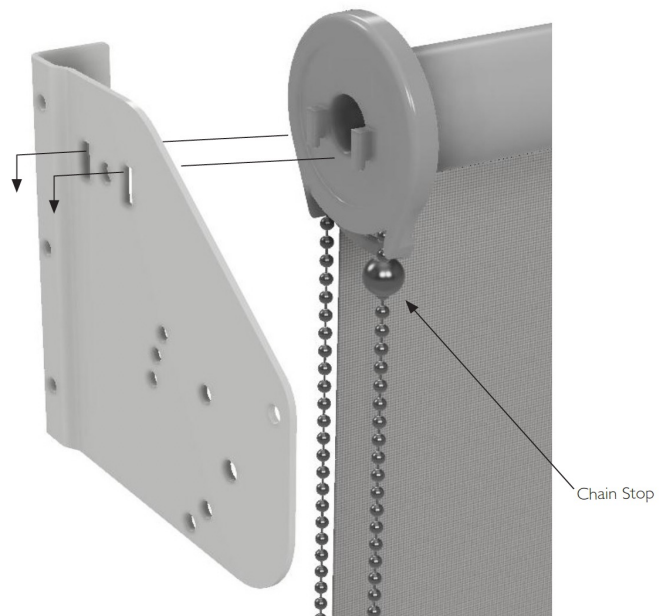
Roller Shade Installation

Insert spring loaded pin-end of roller shade into bracket and compress

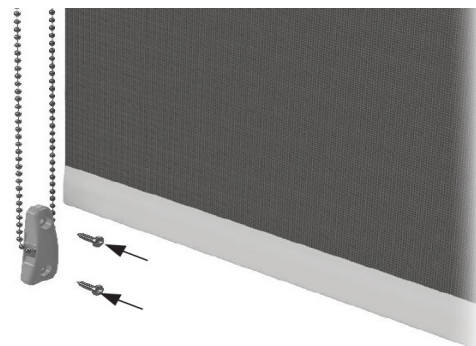


With pin-end compressed slide (walrus) teeth into slotted openings and pull down until the clutch is seated firmly in the slots.

Add ball stop to front chain when shade is in the correct closed (down) position – add ball stop to rear chain when shade is in the correct open (up) position.



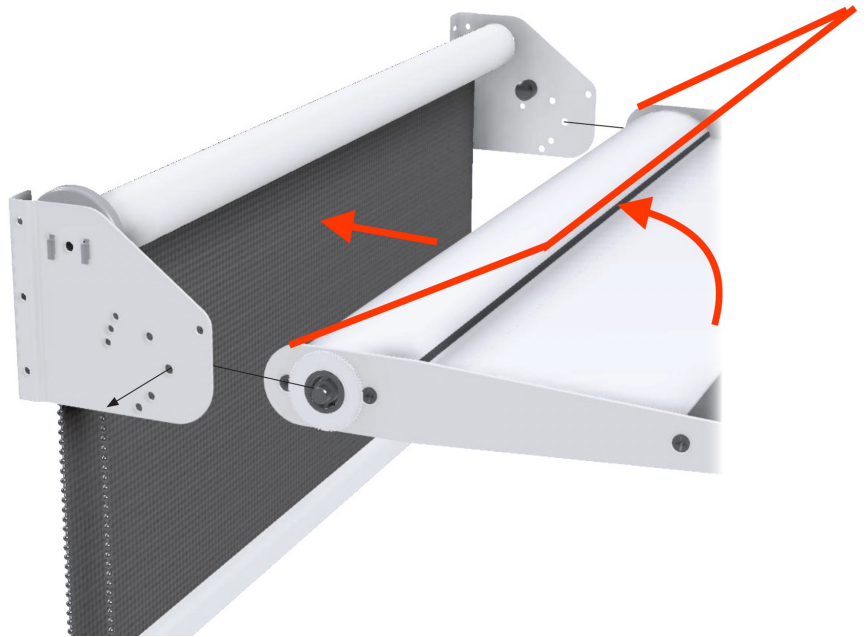
Fasten attached chain safety device to the jamb.



STEP 3

Lightshelf Installation

When inserting the lightshelf hold at an angle upward to clear the rubber stop.



Insert the square drive pin into the worm drive first (having roughly matched the angle of the square opening to the angle of the lightshelf). Compress the heavy-duty pin-end and slide it back into the “hockey stick” slot until it snaps in – slide the lightshelf back until the pin-end seats into the end of the slot. Finally, insert a crank into worm drive and test for free rotation and proper horizontal position against rubber stop.