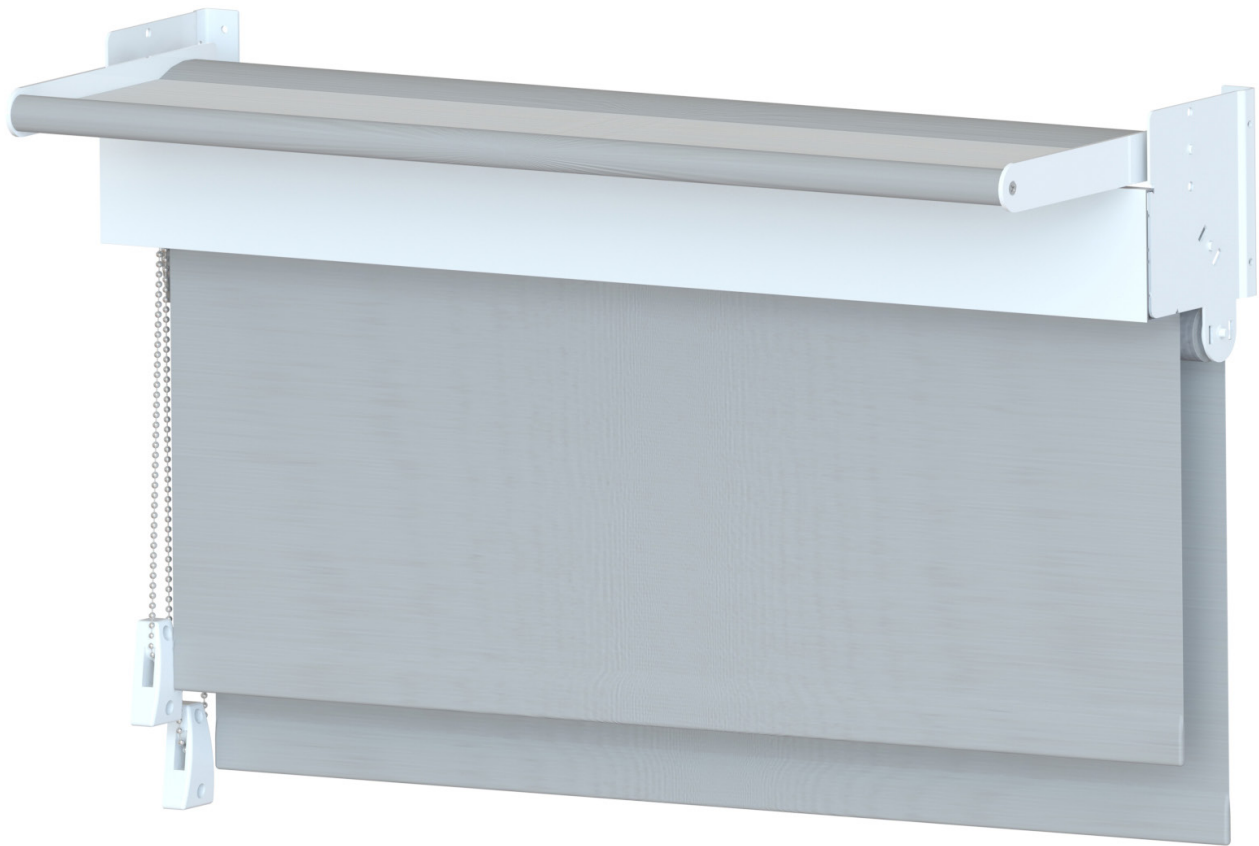




INSTALLATION INSTRUCTIONS

D-SERIES DAYLITER DUAL SHADE



** PLEASE READ ENTIRE INSTALLATION INSTRUCTIONS BEFORE ASSEMBLING THE PRODUCT

SUGGESTED TOOLS

DRILL
LEVEL
PENCIL
SCREWDRIVER
TAPE MEASURE

I. MOUNTING OPTIONS & INFORMATION

INSIDE MOUNT – Dayliter Shade is mounted to the structural jamb inside the window opening

FRONT MOUNT – Dayliter Shade is mounted to the window frame or front of the window mullion

NOTE:

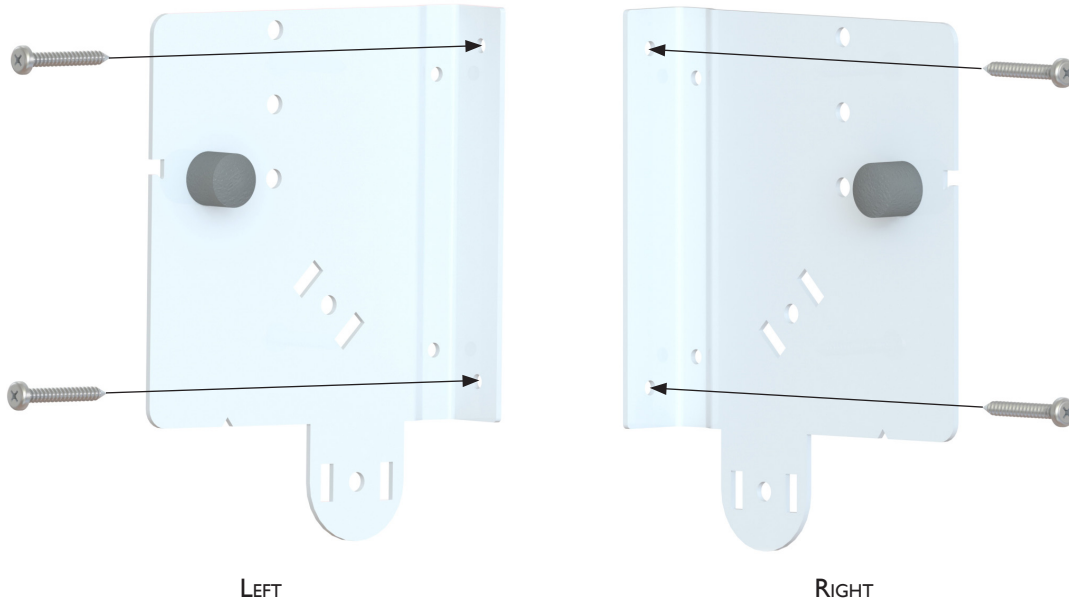
Mounting screws provided are suitable for most mounting surfaces *(Please see below for additional notes)*

WALLBOARD OR PLASTER – Use hollow wall anchors for added support

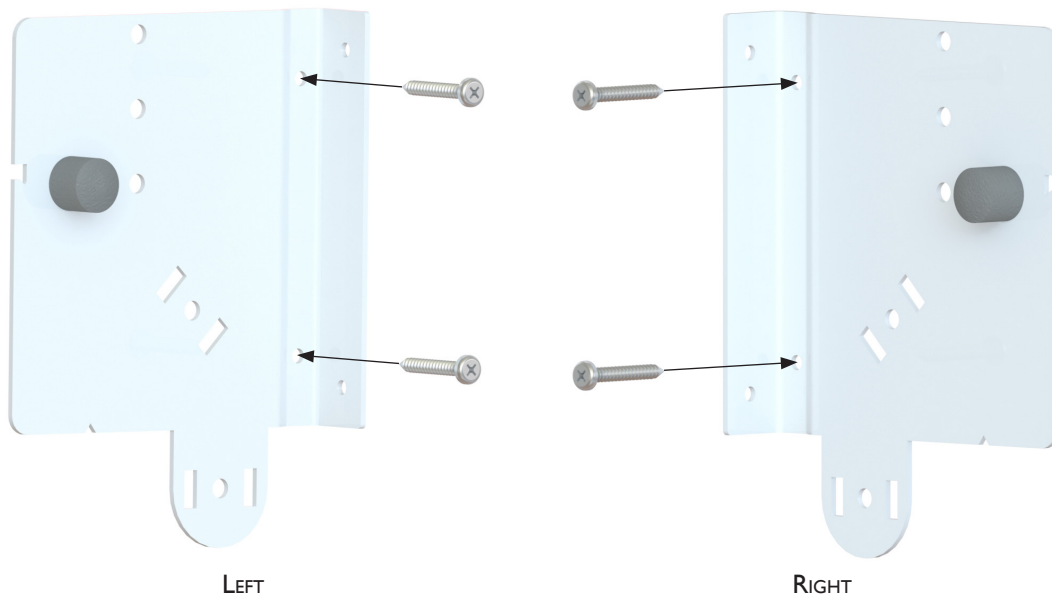
CONCRETE, STONE, BRICK, OR TILE – Use appropriate drill bit and anchors before fastening the screws

METAL SURFACES – Pre-Drill holes before fastening the screws

FRONT MOUNT



INSIDE MOUNT



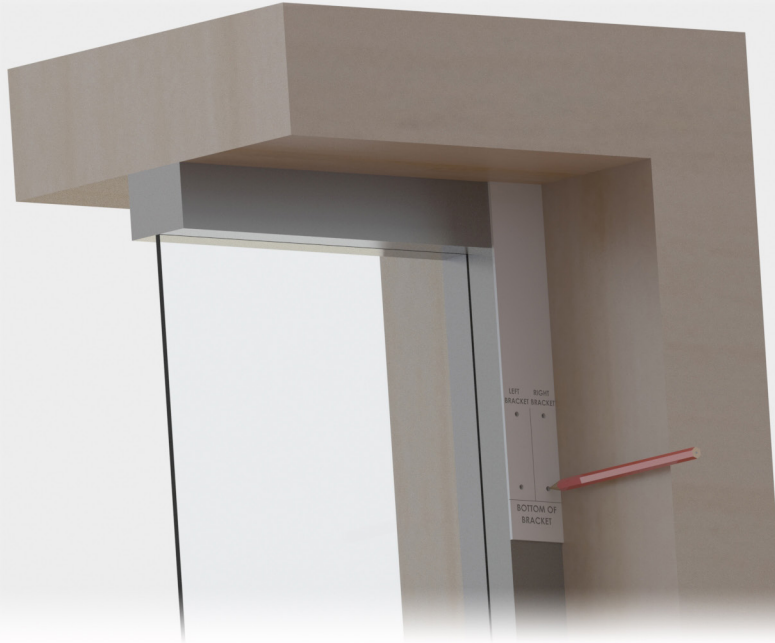
2. MOUNTING BRACKET LOCATION

USING THE TEMPLATE PROVIDED – Mark the location of the holes to be drilled for the mounting brackets
(The template will indicate whether the brackets are to be inside or front mounted)

ATTACH BRACKETS – Using supplied hardware – Use level to ensure brackets are vertical before tightening

IMPORTANT:

TO ENSURE THE SHADE OPERATES CORRECTLY – Make sure the head of the window opening is relatively straight and level prior to using the template
– **IT IS CRITICAL THAT THE BRACKETS ARE LEVEL**

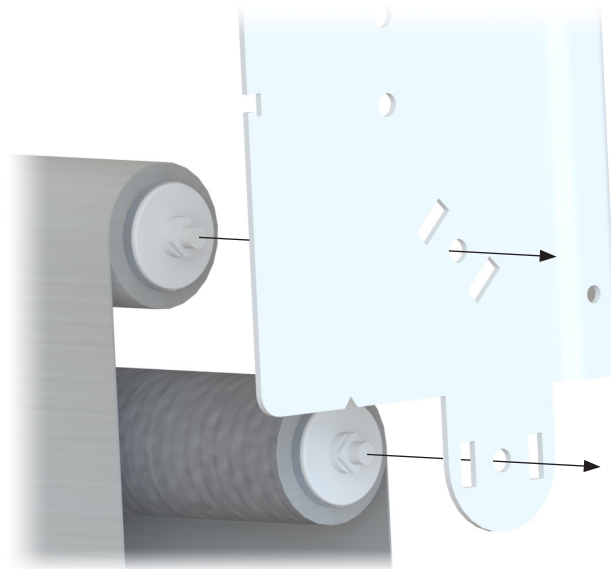


NOTE: Template should be positioned on the jamb for inside mount

3. INSTALL ROLLER SHADE

WITH SHADE ROLLED ALL THE WAY UP – The pin end snaps into the hole on right side then the clutch slots are inserted on the left
(or vice versa, depending on clutch installation)

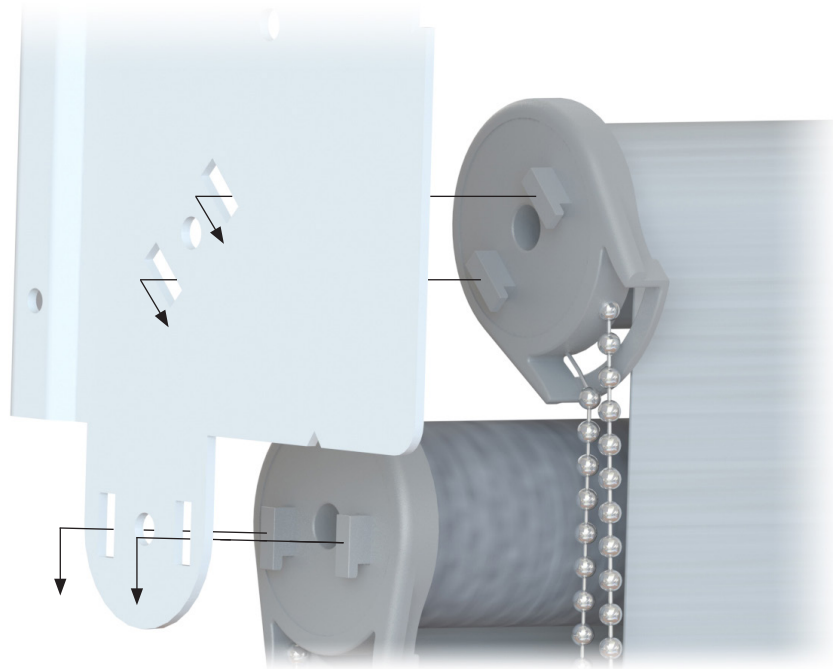
– The clutch should be installed on the side best suited to the room layout (or user preference)



4. ROLLER CLUTCH – CHAIN INSTALLATION

ATTACH SAFETY CHAIN HOLD to either Frame or Jamb – Ensure roller shade operates freely using chain operator

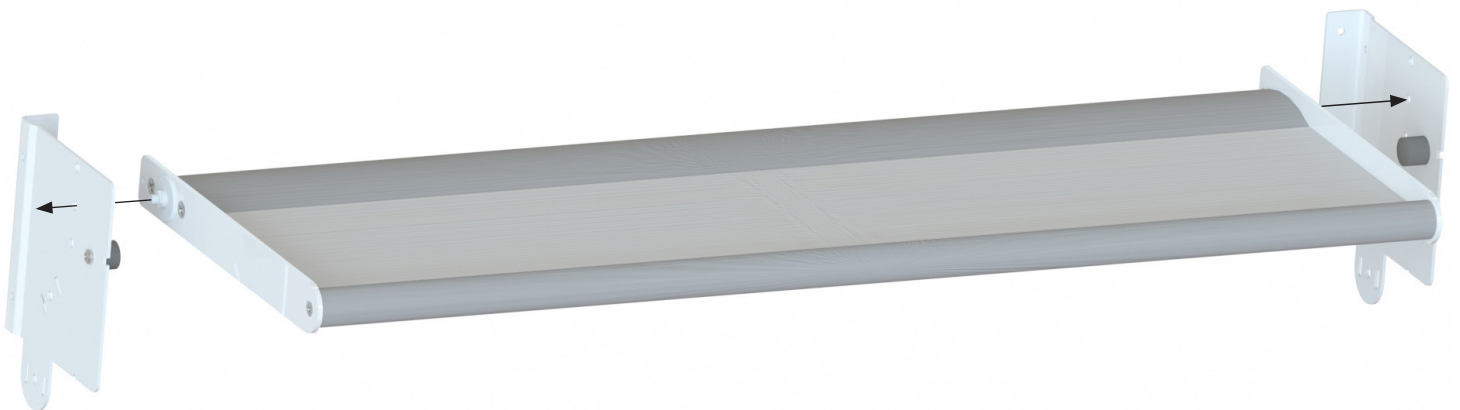
INSTALL OPTIONAL CHAIN STOPS with shade in closed position (*all the way down*) – Prevents shade tube from being exposed by over rotation



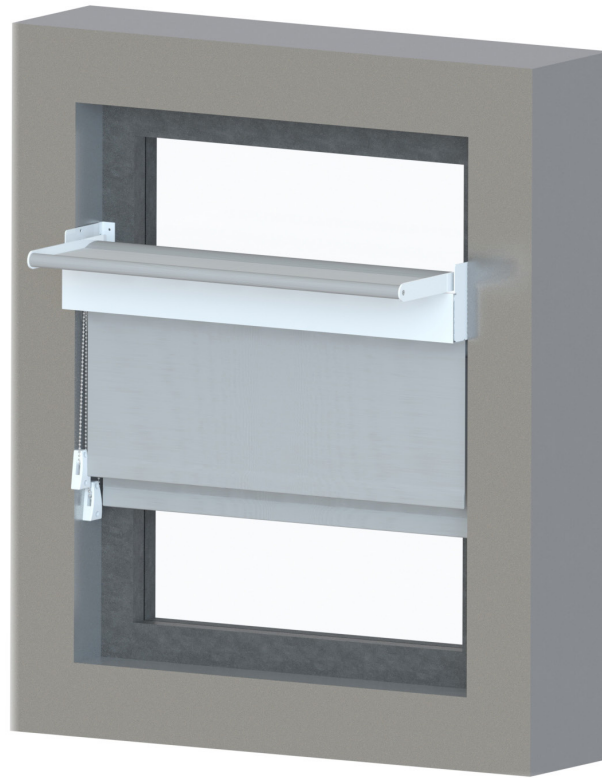
5. INSTALL LIGHTSHELF

SNAP PIN END into the hole on one side and then guide the other pin end into the hole on the opposite side

ENSURE LIGHT SHELF rotates (*open & closed*) freely and will remain in closed position when rotated up



SINGLE SHADE APPLICATION



MULTIPLE SHADE APPLICATION

